

CMU arch 48.205 - 2nd year architecture studio - Room MM320

Instructor: Tom Price

Contact: thprice@andrew.cmu.edu

Hours: M.W.F. 1:30-4:30 & by appointment

week 1 & 2 schedule

January 14-25



M > 01.14.08

Lecture 1 + Project 1 - Fire Tower - Introduction/Class Discussion

The spectacle of fire and a poetic landmark

Assignment for Wednesday

Visit the site. Explore and document view corridors, edge conditions [railroad, river, bridge], circulation & access [pedestrian and vehicular], solar orientation, and above all else design opportunities.

Choose a location on the site for your tower. Create an illustration or series of illustrations that communicate the reasons/site influences that encouraged you to choose this exact position. Your Image(s) should tell the story of the place and how it influenced your decisions. In addition draw a site plan [map path of fire engine].

W > 01.16.08

Pin-up > The story of the site sketch and site plan - discuss as group - briefly discuss masonry and the block system project

Assignment for Friday

Select one vertical architectural element [walls, stair tower, columns, etc.] that will be made from modular masonry units and choose one additional material that interfaces with the masonry to create a composite 'structure'. Explore how the two materials can be arranged to create a poetic expression [form, function, interaction with light]. Create a simple yet exquisite 3D image (hand drawn or computer generated) to show how these two materials come together to form the 'shell' of the tower. Image should be oriented vertically on 11"x17" sheet of paper.

Integrate this initial design concept of your tower into the site. Produce the following illustrations to scale:

1. A section through the site and the building. Section should be cut through railroad and river. Collage site photos into your section for contextual reference. Include fire engine and people as scale references.
2. An elevation of the tower with sun shadows and material textures. Incorporate cladding/enclosure materials that will add to the artistic image of the tower.

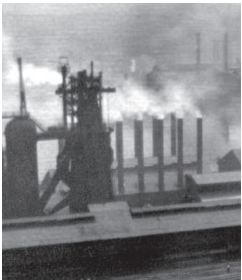
F > 01.18.08

Lecture 2 - Block System DFAB

Pin-up > 3D sketch and scale drawings - discuss as group - discuss model making

Assignment for Wednesday [no class on Monday]

Create a physical model of the site with your fire tower on it. Model must include topography and other site features [river, railroad, adjacent buildings, trees]



CMU arch 48.205 - 2nd year architecture studio - Room MM320

Instructor: Tom Price

Contact: thprice@andrew.cmu.edu

Hours: M.W.F. 1:30-4:30 & by appointment

week 1 & 2 schedule

January 14-25



M > 01.21.08

NO CLASS - Martin Luther King Holiday

Continue working on your physical model.

W > 01.23.08

Masonry Charette

Table Discussion > review physical models at common table

Assignment for Friday

Develop elevations of all 4 sides of tower. Elevations can be hand drawn or computer generated and must include sun shadows and material textures. Arrange elevations side by side on one sheet of paper and label north, south, east, and west.

Cut a section through the building and the site. The section must illustrate the circulation system you have designed to access each level and programmatic space within the tower. Include fire engine with raised ladder and firemen for scale.

Generate a daytime perspective rendering of your tower on the site (photo montage). The image should reflect the landmark nature of the tower.

F > 01.25.08

Lecture 3 - To be determined

Pin-up > Enlarged section perspective + rendering - discuss as group

Assignment for Monday

Generate a night time perspective rendering of your tower on the site (photo montage).



example of section through building and its site